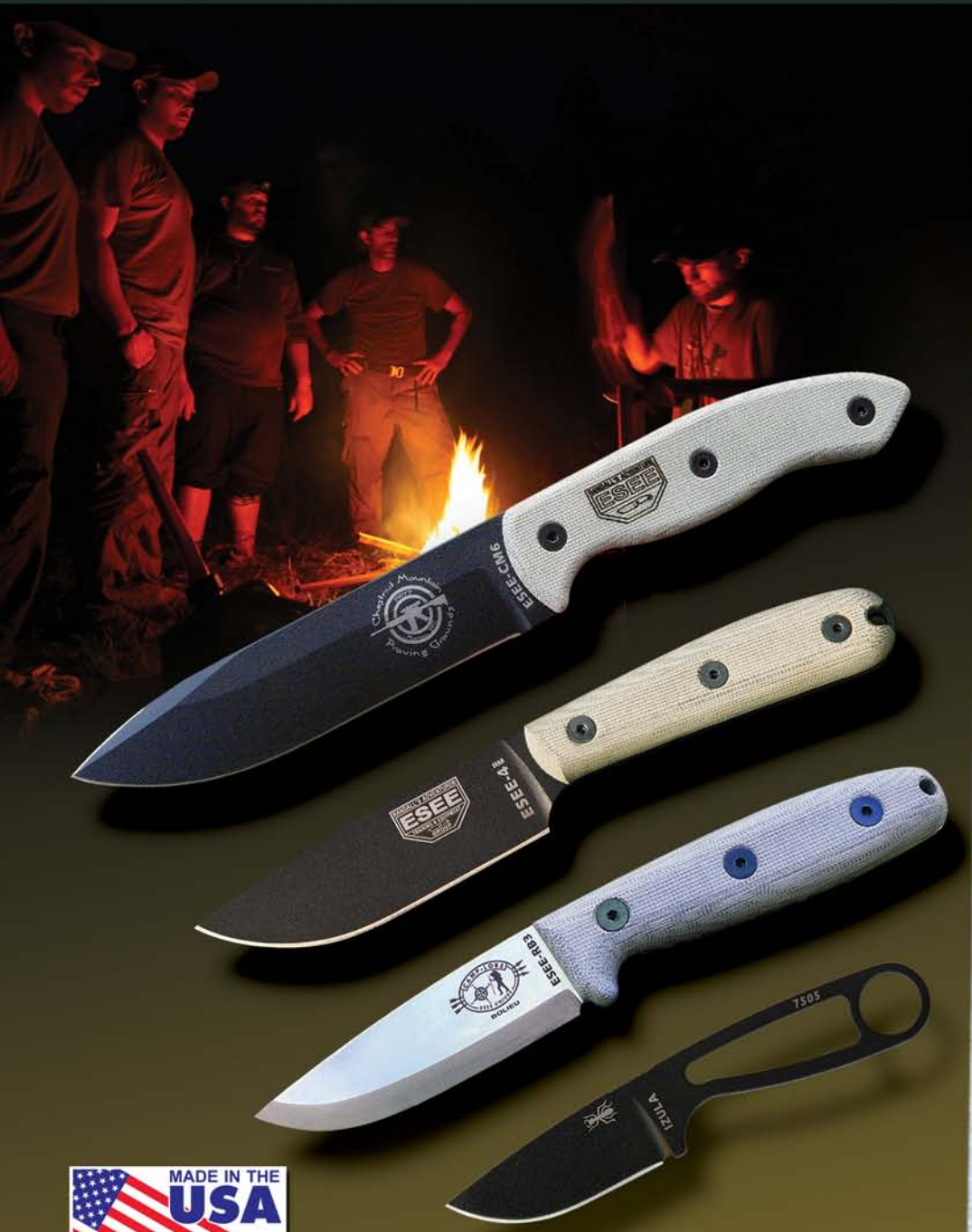


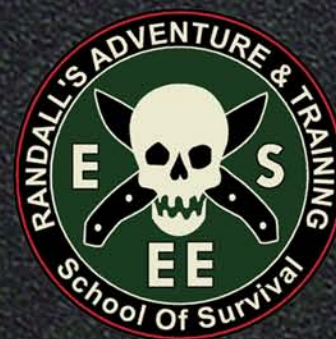
ESEE® KNIVES

RANDALL'S ADVENTURE & TRAINING®

KNIVES • GEAR • TRAINING
For The Real World



WWW.ESEEKNIVES.COM



Catalog E

ESEE® KNIVES

Escuela de Supervivencia (school of survival) Escape and Evasion.



For more than 18 years, Randall's Adventure Training / ESEE Knives has provided the necessary gear and training to survive some of the most remote locales on earth, whether it's interdicting drug traffickers in Colombia, building aid stations in Africa or simply surviving the local back-country.

"We train law enforcement officers, SAR personnel, NGOs, agents, and outdoorsmen in critical skillsets, including land navigation, wilderness survival, improvised wilderness medical techniques, man tracking and other life-saving skills," says Jeff Randall, President of Randall's Adventure Training (sister company to ESEE Knives). Having spent the past two decades training in the jungles of South America, as well as the backcountry of North America, the company has grown into one of the most respected names in the survival training and knife industries.

The company's Vice-President, Mike Perrin, describes the growth and changes that have occurred since the company's inception. "Our training is more diverse and targeted now, and the knife and gear offerings have greatly expanded since our beginnings in 1997. But even though we have evolved and grown, our company has remained true to its original mission: provide students a one-stop-shop for skills and tools needed to save lives, keep the price reasonable, and back everything with the best warranty and customer service in the industry."

Randall's Adventure Training was in the survival training business long before the 'survival' craze hit the market. As Jeff explains, "Real survival can be extremely hard work, both mentally and physically, and rarely resembles the entertainment value shown on 'survival' TV. We distill our training and tools down to the ground truth of what works based on years of experience. When a survivor has a better understanding of the environment they're thrust into, and what to do should things go sideways, then it greatly increases their odds of making it home to their family."

Jeff adds: "We simply saw a need that wasn't being filled when it came to real-world gear and training. There's a ton of good gear out there, but many gear companies lack the 'hands-on' training to back up their designs. ESEE is changing the way a knife and gear customer looks at what they're buying or trusting their life to. Even though our company has grown, Mike and I are still hands-on when it comes to our school, gear, customer service and quality, and always will be."



Avoid counterfeits. Buy only from authorized ESEE dealers.
www.eseeknives.com/dealers.htm



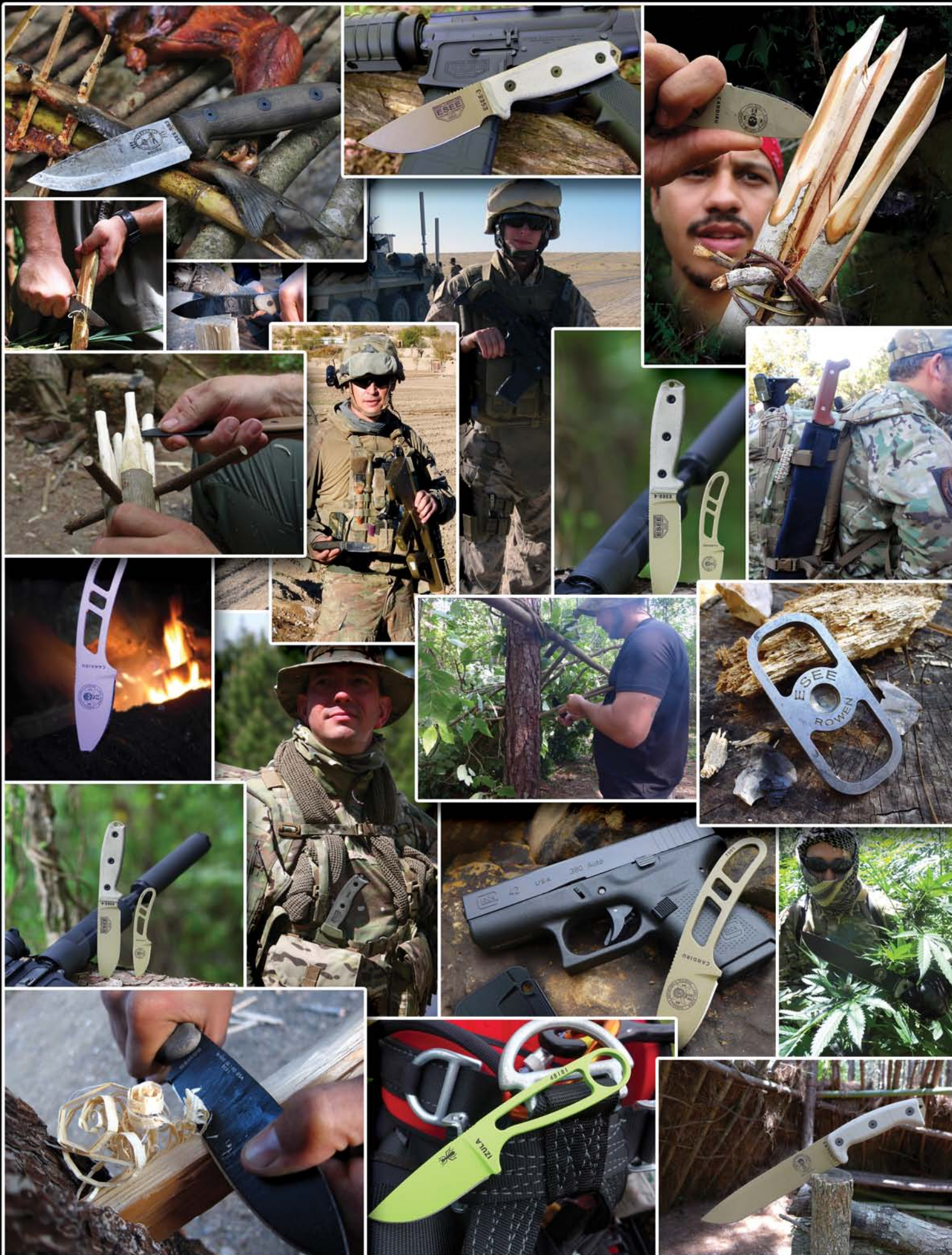
ESEE® Knives / Randall's Adventure & Training®

P.O. Box 99 • Gallant, AL 35972 • PH: (256) 613-0372 • FAX: (256) 570-0175

Internet: www.eseeknives.com • Email: info@eseeknives.com

Unless noted, all ESEE Knives are boxed.
ESEE boxes include survival, navigation
and emergency signaling information
printed on the box sleeve.

ESEE®, Junglas®, Izula®, Izula Gear®, Candiru®, Camp-Lore®, Randall's Adventure Training®, Avispa®, and Randall's Adventure & Training® are registered trademarks of TransEquatorial Solutions, Inc.® All contents, knife, gear and training photos are © copyright 1997-2016 TransEquatorial Solutions, Inc.®



ADVANCED SURVIVAL KIT

Survival Kit For Pilots, Motorists, Outdoorsmen And World Travelers



The ESEE ADVANCED KIT was developed by Randall's Adventure & Training as a comprehensive survival kit for pilots, motorists, outdoorsmen and world travelers. The kit features a made in the USA Cordura bag (available in blaze orange or OD) with detachable map case and removable backpack straps. The kit components have been chosen by the Randall's Adventure & Training team after years of working in remote locations with minimal gear. For emergency uses, the kit is capable of providing most survival requirements. From shelter, fire, navigation, self-rescue and water gathering, to short rappels down steep environments.

Overall Size: 7" x 12" x 8"
Weight: 5 pounds

Item # (Includes Pack, Map Case and Contents):
ESEE-ADVANCED-KIT-OD (OD Bag and Map Case)
ESEE-ADVANCED-KIT-OR (Orange Bag and Map Case)

Contents (Subject To Substitutions):

Cordura Kit Bag
Detachable Map Case
ESEE-4P Knife (Special Edition)
Victorinox Hiker Knife
Randall's Adventure & Training Mess Tin w/ Handle
25' 8mm Prusik Cord/Rope
24 kN Load Rated Carabiner
Nav Card Set
Survival Card Set
Rite In The Rain Nav/Survival Notepad
Yalumi Dual 4012 Headlight
Snare Wire
30' Small Cordage
Basic Fishing Kit
Rapid Rescue Orange Whistle
Emergency Signal Mirror
Orange Survey Tape
Pocket Spiral Saw (Wire Saw)
Emergency Duct Tape
Fresnel Lens
Brite Strike APALS Light (2 each)
Pencil
Ranger Bands
H-Bandage
Suunto A10 Compass
Quick Disconnect Keyring
Water Bags (4 each 1-Quart)
Potable Aqua Tablets
Survival Blanket (2 each)
Utility Flame (2-Pack)
Large Fire Steel
Waterproof Matches
Tinder Quik Fire Tabs
AAA Batteries
Kevlar Trip Line Spool (100')
Sewing Needle w/ Cordura Patch
1.5 MIL Yellow Trash Bag (2 each)
Signal Panel / Tarp (60" x 60")



(Photo Credit: Terrill Hoffman)



MESS TIN SURVIVAL KIT

Compact Survival Kit For Pilots, Motorists, Outdoorsmen And World Travelers



Our mess tin survival kit is designed around quality tools used by our team members and wilderness survival students. Key components of the survival priorities are addressed, including water, fire, navigation, signaling, food gathering and navigation. The kit is small enough to stow in a daypack and carried every day.

Dims: 6.25" x 4" x 2.5"
Weight: 25 Ounces



Contents (Subject To Substitutions):

Randall's Adventure & Training Large Tin
ESEE Candiru Knife
Pocket Map Card Set
Survival Card Set
Victorinox Hiker Knife
Potable Aqua Tablets
Suunto Compass
Kevlar Line (100' Spool)
Snare Wire
Basic Fishing Kit
Tinder Quik Fire Tabs
Rapid Rescue Whistle
Emergency Duct Tape
Red Fresnel Lens
10' Orange Survey tape
30' Small Cordage
Pencil
Brite Strike Lite (2 Each)
Waterproof Matches
Emergency Signal Mirror
Large Fire Steel
Emergency Water Bags
Sewing Needles & Cordura Patch

Item #:

LARGE-TIN-KIT (Large Tin With Survival Contents - No Pouch, No Survival Blanket)

LARGE-TIN-KIT-OD (Large Tin With Survival Contents, Survival Blanket And OD Pouch)

LARGE-TIN-KIT-OR (Large Tin With Survival Contents, Survival Blanket And Orange Pouch)

RANDALL'S ADVENTURE & TRAINING® LARGETIN (Tin Only - No Contents):

Our large tin was developed to contain your survival kit and to cook in. Dims: 6.25" x 4" x 2.5" • Weight: 6 oz. Material: Aluminum • Special Features: Folding handle, embossed Randall's Adventure and Training logo on lid. Tin made in China.

Item #: KIT-TIN



RANDALL'S ADVENTURE & TRAINING® TIN POUCHES:

A heavy-duty pouch made from 1000 denier nylon fabric designed to hold the large mess tin with enough space for an emergency blanket or other contents. Double MOLLE straps, two mini storage flaps, and secure four-flap closure with buckle. Dimensions: 5" x 8" x 3.5" Made in the USA.

Item #:

LARGE-TIN-POUCH-OD (OD Pouch Only)

LARGE-TIN-POUCH-OR (Orange Pouch Only)





ESEE-3HM / ESEE-4HM

ESEE-3 and ESEE-4 Blades With Traditional Handles And Black Leather Sheaths

ESEE-3HM SPECS:

Overall Length: 8.13"
Cutting Edge Length: 3.38"
Overall Blade Length: 3.63"
Maximum Thickness: .125"
1095 Carbon Steel, 55 - 57 Rc.
Weight: 5.6 Ounces (Knife Only)
Sheath: Black Leather Pouch
Finish: Powder Coated
Handle Material: Canvas Micarta

Item #:

ESEE-3HM (Plain Edge, Black Blade)



ESEE-3HM



ESEE-4HM SPECS:

Overall Length: 8.88"
Cutting Edge Length: 4.13"
Overall Blade Length: 4.38"
Maximum Thickness: .188"
1095 Carbon Steel, 55 - 57 Rc.
Weight: 7.7 Ounces (Knife Only)
Sheath: Black Leather Pouch
Finish: Powder Coated
Handle Material: Canvas Micarta

Item #:

ESEE-4HM (Plain Edge, Black Blade)



ESEE-4HM



CAMP-LORE[®] SERIES



Cody
Rowen



Reuben
Bolieu



James
Gibson

The Camp-Lore series was developed to answer the demand for traditional, basic, bushcraft knives. The designers of this knife series come from unique backgrounds and experiences, with each considered to be one of the best in their field. All of the Camp-Lore knives are simple, traditional, fixed-blade designs that have been field-proven for years. Keeping with that simplistic approach, ESEE builds the Camp-Lore line in the USA utilizing 1095 uncoated carbon steel and removable Micarta handles which allows the user to apply a traditional patina to the blade without the need for removing a blade coating. Each Camp-Lore knife comes with a USA made traditional pouch sheath using leather supplied by one of the oldest tanneries in North America.



CR2.5 (Designed By Cody Rowen):
Overall Length: 6.25"
Blade Max. Thickness: .125"
Weight (Knife Only): 2.5 ounces

RB3 (Designed By Reuben Bolieu):
Overall Length: 8.13"
Blade Max. Thickness: .125"
Weight (Knife Only): 6 ounces

JG3 (Designed By James Gibson):
Overall Length: 7.63"
Blade Max. Thickness: .125"
Weight (Knife Only): 4.5 ounces

Item #:
ESEE-CR2.5 Cody Rowen Design, Flat Grind, Leather Sheath
ESEE-RB3 Reuben Bolieu Design, Scandi Grind, Leather Sheath
ESEE-JG3 James Gibson Design, Flat Grind, Leather Sheath

IZULA®

Survival Kit / Concealed Carry / Rescue Knives



The locals in the Amazon call the meanest, most aggressive ant in the jungle "Isula" (spelled with an "s"). We know it as the Bullet Ant. The Bullet Ant is known to be independent, tough, light on its feet, and a real aggressive survivor. The IZULA knife is built the same way... mean and nasty! Designed to be the ideal survival kit, small skinner, emergency rescue, back-up or concealed carry knife.

IZULA SPECS:

Overall Length: 6.25"

Blade Length: 2.63"

Thickness: .156"

Steel: 1095 Carbon (Carbon Steel Models)

Steel: 440C (Stainless Steel Model)

Weight: 2.0 Oz. (Knife Only)

Finish: Textured Powder Coat (Carbon Steel)

Finish: Tumbled, Uncoated (440C Model)

Grind: Flat

Sheathing: Molded

Pommel: Carabiner Hole



Item # (Knife, Sheath and Clip Plate):

IZULA-B: Black Knife, Black Sheath

IZULA-DT: Desert Tan Knife, Black Sheath

IZULA-OD: Olive Drab Knife, Black Sheath

IZULA-P: Pink Knife, White/Clear Sheath

IZULA-VG: Venom Green Knife, Black Sheath

IZULA-SS: 440C Stainless Steel Knife, Black Sheath*

IZULA-DE: Dark Earth Knife, Black Sheath

IZULA-PURP: Purple Knife, White/Clear Sheath

Item # (Knife, Sheath, Clip Plate and Kit):

IZULA-B-KIT: Black Knife, Black Sheath

IZULA-DT-KIT: Desert Tan Knife, Black Sheath

IZULA-OD-KIT: Olive Drab Knife, Black Sheath

IZULA-P-KIT: Pink Knife, White/Clear Sheath

IZULA-VG-KIT: Venom Green Knife, Black Sheath

IZULA-SS-KIT: 440C Stainless Steel Knife, Black Sheath*

IZULA-DE-KIT: Dark Earth Knife, Black Sheath

IZULA-PURP-KIT: Purple Knife, White/Clear Sheath

For Clam Shell Packaging Add -CS To Part #

Optional Handle Scales Available For Standard IZULA

Item # **IZULA-HANDLE** (Micarta)

Item # **IZULA-HANDLES-B** (Black G10 - Full Length Handles)



Avoid counterfeits. Buy only from authorized ESEE dealers: www.eseeknives.com/dealers.htm



Item # **IZULA-MOLLE-BACK-B** (Black)

Item # **IZULA-MOLLE-BACK-K** (Khaki)

Item # **IZULA-MOLLE-BACK-OD** (OD)



IZULA MOLLE Back
Fits IZULA & CANDIRU Knives
(Sheath Not Included)



Izula Ant
Special Edition
Item #: **IZULA-B-ANT**

IZULA-II

IZULA II & IZULA KITS

The IZULA-II is the same as the standard IZULA but has 1/2" of length added to the handle and includes micarta handle slabs.



Item # (Knife, Sheath and Clip Plate):
IZULA-II-B: Black Knife/Black Sheath
IZULA-II-OD: Olive Knife/Black Sheath
IZULA-II-DT: Desert Tan Knife/Black Sheath



IZULA-II SPECS:

Overall Length: 6.75"
Blade Length: 2.63"
Thickness: .156"
Steel: 1095 Carbon
Weight: 3.2 Oz. (Knife Only)
Finish: Textured Powder Coat
Grind: Flat
Sheathing: Molded
Pommel: Carabiner Hole
Handles: Canvas Micarta

Item # (Knife, Sheath, Clip Plate and Kit):
IZULA-II-B-KIT: Black Knife/Black Sheath With Complete Kit
IZULA-II-OD-KIT: Olive Knife/Black Sheath With Complete Kit
IZULA-II-DT-KIT: Desert Tan Knife/Black Sheath With Complete Kit

For Clam Shell Packaging Add -CS To Part #



Sheath & Ambidextrous
Clip Plate. Now available in
Coyote, Olive and Clear.



Complete Kit Includes:

- A. ParaCord
- B. Cord Lock
- C. Large Split Ring
- D. Small Split Ring
- E. Ferro Fire Starting Rod
- F. Emergency Whistle
- G. Plastic Snap Hook



Item #:
IZ-KIT: Kit Only (Shown Above)





CANDIRU®

The legendary Candiru is one of the most feared fish in the Amazon jungles. Although extremely small, it's known for its parasitic abilities by swimming up the gills and orifices of other fish and feeding on their blood. The Candiru is also known as the toothpick fish, vampire fish, and the "don't pee in the water" fish.

CANDIRU SPECS:

Overall Length: 5.13"
Cutting Edge Length: 2.0"
Weight: 1.7 Ounces
Drop Point Blade Style
Maximum Thickness: .125"
1095 Carbon Steel - 55-57 Rc.
Textured Powder Coat Finish
Skeletonized Handle
Individually Serialized
Available in Black, Olive, Desert Tan, Dark Earth, Pink and Purple.



Item # (Knife, Sheath, & Clip Plate):

CAN-B (Black)
CAN-OD (OD)
CAN-DT (Desert Tan)
CAN-DE (Dark Earth)
CAN-PURP (Purple)
CAN-PINK (Pink)

Item # (Knife, Sheath, Clip Plate & Kit):

CAN-B-KIT (Black)
CAN-OD-KIT (OD)
CAN-DT-KIT (Desert Tan)
CAN-DE-KIT (Dark Earth)
CAN-PURP-KIT (Purple)
CAN-PINK-KIT (Pink)

For Clam Shell Packaging Add -CS To Part #



Candiru Molded Sheath



Candiru Clip Plate In Clear/White

Candiru Handle Scales

Item #:
CAN-HDL-CNV
(Canvas Micarta Handles)
CAN-HDL-OR
(Orange G10 Handles)



ESEE-3

The Industry Standard In Law Enforcement
And Special Team Sheath Knives



ESEE-3 SPECS:

Overall Length: 8.31" (Standard Model)
Overall Length: 8.19" (Modified Pommel)
Cutting Edge Length: 3.38"
Overall Blade Length: 3.88"
Maximum Thickness: .125"
1095 Carbon Steel, 55 - 57 Rc.
Weight: 5.2 Ounces (Knife Only)
Weight: 9.3 Ounces (Knife w/ Sheath)
Sheath: Molded
Finish: Uncoated & Powder Coated
Handle Material: Canvas Micarta & G10



Avoid counterfeits. Buy only from authorized ESEE dealers.
www.eseeknives.com/dealers.htm

Item #:

ESEE-3P (Plain Edge, Black Blade, Coyote Brown Sheath)
ESEE-3S (Partially Serrated, Black Blade, Coyote Brown Sheath)
ESEE-3PM (Plain Edge, Modified Pommel, Black Blade, Coyote Brown Sheath)
ESEE-3SM (Partially Serrated, Modified Pommel, Black Blade, Coyote Brown Sheath)
For Desert Tan Blade Add **-DT** To Item # Above (Ships w/ OD Sheath).
For OD Blade w/ Orange Handles Add **-OD** To Item # Above (Ships w/ Black Sheath)
ESEE-3P-MB-DE (Plain Edge Only, Dark Earth Blade, Black Sheath, MOLLE Back)
ESEE-3PM-VG (Plain Edge Only, Modified Pommel, Venom Green Blade, Black Sheath)
ESEE-3P-UC (Plain Edge Only, Uncoated Blade, Coyote Brown Sheath)

All Standard ESEE-3 Knives Ship With Molded Sheath And Clip Plate.
For Sharpened Top Edge Add **-CP** To Item # (Available On Black Blades Only)
To Add Cordura MOLLE Backs Add **-MB** To Item #

ESEE-3MIL

Sharpened Glass Breaker Pommel With MOLLE Back And Clip Plate
Canvas Micarta Handles, OD Green Sheath (Available In Black Blade Only)

Item #:

ESEE-3MIL-P (Plain Edge, Black Blade, OD Green Sheath)
ESEE-3MIL-S (Partially Serrated, Black Blade, OD Green Sheath)
Add **-B** To Above Part Numbers For Black Sheath
For Sharpened Top Edge Add **-CP** To Item #
ESEE-3MIL-P-BLK (Plain Edge, Black Blade, Black G10 Handle, Black Sheath)



ESEE-3MIL-P-CP



ESEE-4

Survival Craft & Tactical



ESEE-4 SPECS:

Overall Length: 9.0"
Cutting Edge Length: 4.1"
Overall Blade Length: 4.5"
Blade Width: 1.25"
Weight (Knife Only): 8.0 ounces
Drop Point Blade Style
Maximum Thickness: .188"
1095 Carbon Steel, 55 - 57 Rc.
(Carbon Steel Model)
Removable Handles
Rounded Pommel w/ Lanyard Hole
Ambidextrous Molded Sheath

Item #:

ESEE-4P (Plain Edge, Black Blade)
ESEE-4S (Partially Serrated, Black Blade)
For OD Blade w/ Orange Handles Add **-OD** To Item #
For Desert Tan Blade Add **-DT** To Item #
ESEE-4P-VG: Venom Green Blade w/ Orange
Handles (Plain Edge Only)
ESEE-4P-MB-DE: Dark Earth Blade, MOLLE Back
ESEE-4P-UC: Uncoated Blade (Plain Edge Only)
To Add Cordura MOLLE Backs Add **-MB** To Item #
For Sharpened Top Edge Add **-CP** To Item #
(Available On Black Blades Only)

ESEE-4 440C Stainless Steel

ESEE-4P-SS (Plain Edge, Stainless Steel,
Canvas Micarta Handles)*
ESEE-4P-SS-OR (Plain Edge, Stainless Steel,
Orange G10 Handles)*

* 440C Stainless Steel is not as flexible as carbon steels.
Any excessive flexing of the blade may cause breakage.



ESEE-4P-CP (Sharpened Top Edge)



LASER STRIKE™

Survival Craft And Fire Making

LASER STRIKE:

Named after a late 1990s counterdrug operation in South America involving numerous international agencies, including U.S. Special Operations Forces, the operation was known as "Operation Laser Strike."

Item #: ESEE-LS-P

(Plain Edge, Black Blade)



Laser Strike comes with Kydex sheath, belt clip plate and handle removal washer. Ferrocium fire starting flint and tinder tabs are included inside the handle.



LASER STRIKE SPECS:

Overall Length: 10.0"
Cutting Edge Length: 4.5"
Overall Blade Length: 4.75"
Blade Width: 1.38"
Weight (Knife Only): 9.5 Ounces
Maximum Thickness: .188"
1095 Carbon Steel, 55 - 57 Rc.
Blade Finish: Black Powder Coat
Removable Handles
Bow Drill Divot In Handle
Rounded Pommel w/ Lanyard Hole
Ambidextrous Black Kydex Sheath



CM6

ESEE-CM6

Item #: ESEE-CM-6

(Plain Edge, Black Blade)

Overall Length: 11.13"

Overall Blade Length: 5.88"

Blade Width: 1.38"

Weight (Knife Only): 10 ounces

Maximum Thickness: .188"

1095 Carbon Steel, 55-57 Rc.

Removable Canvas Micarta Handles

Sheathing: Black Kydex w/Adjustable Tensioner

Coating: Textured Black Powder Coat

All Knives Engraved w/ Serial Number



CM6: DESIGNED BY TERRILL HOFFMAN,

The ESEE-CM6 is the joining of tactical & practical making this new knife at home in the American forests or the battlefields around the world. The 5 7/8 inch drop point blade of the CM6 is sized to complete the hardest task without adding excessive weight to your gear load. The sharpened swedge enhances penetration, while the full sized Canvas Micarta handle is shaped to provide a secure and stable grip.



ESEE-5

Designed By Military SERE Instructors As A Hard-Use Downed Pilot's Survival Knife

ESEE-5 SPECS:

Overall Length: 11.0"
 Blade Length: 5.25"
 Thickness: .25"
 Steel: 1095 Carbon, 55-57 Rc.
 Finish: Textured Powder Coat
 Blade Width: 1.56"
 Grind: Sabre
 Weight (Knife Only): 16 Ounces
 Handles: Canvas Micarta
 Sheathing: Kydex Sheath w/ Clip Plate
 Features: Glass Breaker, Bow Drill Divot
 Spine: Thumb Jiming

For Survival, Escape, Evasion &
 Air Mobile Applications



Item #:

ESEE-5P (Black Blade, Plain Edge)
ESEE-5S (Black Blade, Partially Serrated)
ESEE-5P-OD (OD Blade, Plain Edge)
ESEE-5S-OD (OD Blade, Partially Serrated)
ESEE-5P-VG (Venom Green Blade, Plain Edge,
 Orange G10 Handles)



ESEE-6

Wilderness Survival Knives With
 Superb Cutting Efficiency

ESEE-6 SPECS:

Overall Length: 11.75"
 Cutting Edge Length: 5.75"
 Overall Blade Length: 6.50"
 Blade Width: 1.56"
 Weight (Knife Only): 12 Ounces
 Drop Point Blade, Full Flat Grind
 Maximum Thickness: .188"
 1095 Carbon Steel, 55-57 Rc.
 Removable Linen Micarta Handles
 Sheathing: Molded Sheath w/ Clip Plate
 Rounded Pommel w/ Lanyard Hole



Item #:

ESEE-6P (Plain Edge, Coyote Brown Molded Sheath)
ESEE-6S (Partially Serrated, Coyote Brown Molded Sheath)
ESEE-6P-VG (Venom Green Blade, Plain Edge, Orange G10 Handles)
ESEE-6P-DE (Plain Edge, Dark Earth Blade, Black Molded Sheath)
 For OD Sheath Add **-OD** To Item # (Black Blades Only)
 For Black Sheath Add **-B** To Item # (Black Blades Only)
 For Sharpened Top Edge Add **-CP** To Item # (Black Blades Only)

JUNGLAS®

Pronounced "Hoonglas" And Named After The Colombian Jungla Special Operations Forces. Designed For Latin American Jungle And Counter-Narcotics Operations.

JUNGLAS SPECS:

Overall Length: 16.5"
Cutting Edge Length: 9.75"
Overall Blade Length: 10.38"
Blade Width: 2.0"
Weight (Knife Only): 23 Ounces
Maximum Thickness: .188"
1095 Carbon Steel
Removable Micarta Handles
Hammer Pommel w/ Lanyard Hole
Sheath: Kydex w/ MOLLE Back

Item #:

JUNGLAS

(Black Junglas Knife w/ Sheath)

JUNGLAS-VG

(Venom Green Junglas Knife w/ Sheath)

JUNGLAS-DE

(Dark Earth Junglas Knife w/ Sheath)



LITE MACHETE

The Ultimate Jungle Survival Tool

LITE MACHETE SPECS:

Overall Length: 23.25"
Cutting Edge Length: 15.0"
Overall Blade Length: 17.25"
Blade Maximum Width: 2.38"
Weight (Knife Only): 18 Ounces
Maximum Thickness: .080"
Sheath: Ridged Cordura, Ambidextrous Carry



Item #:

LITE-MACHETE (Lite Machete w/ Cordura Sheath)

LITE-MACHETE-KO (Lite Machete Only - No Sheath)

Blade Made in El Salvador. Handles Made In The USA.



SHEATH ACCESSORIES

For Tactical And Survival Applications



ESEE 5/6 MOLLE BACK & POUCH

The ESEE 5/6 MOLLE back fits the ESEE-5, ESEE-6 and Laser Strike sheaths. The top of the MOLLE back has both an adjustable handle retention strap and a flap that can be slipped over the pommel of the knife and secured tight with the paracord and cord lock, thus making the ESEE-5 or ESEE-6 sheath jump safe. Both the top portion and lower portion of the MOLLE back have built-in belt loops and MOLLE straps.

The accessory pouch will bolt to the front of the ESEE-5 or ESEE-6 hard sheath. This pouch will hold either the included storage tin or a regular Altoids tin, as well as any other gear you can fit into the pouch.

MOLLE Back Item #:

ESEE-52-MB (Black)
ESEE-52-MB-OD (OD)
ESEE-52-MB-K (Khaki)

Accessory Pouch Item #:

ESEE-52-POUCH (Black)
ESEE-52-POUCH-OD (OD)
ESEE-52-POUCH-K (Khaki)



Accessory Pouch

MOLLE Back

ESEE 5/6 CLIP PLATE

Designed to fit the ESEE-5, ESEE-6 CM6 and Laser Strike sheaths. Attaches in both left-hand and right-hand configurations.



Item #: ESEE-CLIP-PLATE

JUNGLAS MOLLE PANEL

Bolts directly to the Junglas sheath allowing the user to attach MOLLE compatible gear directly to the Junglas knife and sheath.

(Panel Only - Sheath Not Included)



Item #: JUNGLAS-PANEL-OD (OD)
Item #: JUNGLAS-PANEL-B (Black)

IZULA CLIP PLATE

Ambidextrous clip plate for Izula sheaths. Steel clip can be reversed for inverted carry.



Item #: ESEE-IZBC (Black)
Item #: ESEE-IZBC-CLR (Clear)

ESEE 3/4 MOLLE BACK

Cordura MOLLE Back for the ESEE-3 & ESEE-4



Item #: ESEE-42-MB (Black)
Item #: ESEE-42-MB-OD (OD)
Item #: ESEE-42-MB-K (Khaki)

CANDIRU CLIP PLATE

Ambidextrous Clip Plate for Candiru molded sheath.



Item #: CAN-CLIP-BLK (Black)
Item #: CAN-CLIP-CLR (Clear)

ESEE 3/4 CLIP PLATE

Fits ESEE-3 and ESEE-4 sheaths



Item #:
ESEE-CLIP-PLATE-3/4 (Black)
ESEE-CLIP-PLATE-3/4-OD (OD)
ESEE-CLIP-PLATE-3/4-CB (Brown)



FIRE KITS

From Randall's Adventure & Training / ESEE



ESEE ADVANCED FIRE KIT

Item #: **ADVANCED-FIRE-KIT**

Includes Capsule, Ferro Rod Attachment, Compass Attachment, Extra Thread Protector Rings, Lanyard

The ESEE Advanced Fire Kit is a "last-ditch" modular fire starter and mini survival kit container that includes a 20mm Grade A button compass, IR Glint Tape (USA model only) and Visible Light Reflective Tape with survival tips printed on the body. The watertight capsule has plenty of storage space for tinder, fishhooks, line and other essential survival tools (user supplied). The Fire Kit can be clipped to a belt or vest via the lanyard, carried in your pack or put in the glove box of your vehicle. The compact size and light weight make this kit a very unique survival tool for hikers, adventurers, campers, hunters or anyone else who ventures into the wilds.

Optional Extension Tube doubles the length of the Advanced Fire Kit capsule

Item #: **ADVANCED-FIRE-KIT-EX**



ESEE STANDARD FIRE KIT

Item #: **FIRE-KIT**

The ESEE Fire Kit is a "last-ditch" fire starter and mini survival kit container that includes a 20mm button compass in the cap and survival tips printed on the body. The watertight capsule has plenty of storage space for tinder, fishhooks, line and other essential survival tools (user supplied). The Fire Kit can be clipped to a belt or vest, carried in your pack or put in the glove box of your vehicle. The compact size and light weight make this kit a very unique survival tool for hikers, adventurers, campers, hunters or anyone who ventures into the wilds.



ESEE FIRE STEEL

Item #: **ESEE-FIRE-STEEL**

The ESEE KNIVES® Fire Steel is built from 1095 Carbon Steel and heat treated to be used as a fire making tool for use with true flint and charred material. The edges of the Fire Steel also work as a Ferro Rod striker, and the center divot is designed to be used as a bow drill socket. The Fire Steel comes packaged in a hinged-lid tin that can be used to make char cloth or other charred materials.

SURVIVAL / E&E



ESEE E&E TOOLS

These items are optional add-ons for our Wallet E&E Kit. The package consists of a zipper pull with hidden handcuff key attached by coated Kevlar cord, Micro Escape Tool that can be hidden on the body and used to saw through cordage, tape or flex ties, a handcuff shim, and a Bic pen cap with handcuff key molded into the retention tab. All 4 items come packaged in a plastic tube. **Item #: EE-TOOLS**

IZULA GEAR® WALLET E&E KIT

Cordura Tri-Fold Wallet Style Container, Floss Card With E&E Tips Printed On The Card, Mini Razor Blade, Kevlar Cordage, Signal Mirror, Non-Metallic Handcuff Key, E&E Plastic Instruction Cards, Clear Plastic Survival Nav Card, Ferro/Magnesium Fire Starter, ESEE AH-1 Arrowhead, Fish Hooks, Button Compass, Rare Earth Cylindrical Magnet (Gross Direction Compass). Kit Size: 4 1/4" x 2 3/4". Weight: 4 ounces. **Item#: WALLET-KIT**



(Except for button compass and magnets, all components are made in the USA)

ADVENTURE TRAVEL IN THE THIRD WORLD

Everything You Need to Know to Survive in Remote and Hostile Destinations

Foreword by Robert Young Pelton
author of the best-seller *The World's Most Dangerous Places*



ADVENTURE TRAVEL IN THE THIRD WORLD

Authors Jeff Randall and Mike Perrin have logged thousands of miles overseas and have years of experience leading travelers deep in the wildest cities and most rugged backcountry of the Third World. In this book, they help you recognize and minimize the many risks that come with venturing way, way off the beaten path so that you can come home with stories the average tourist will never be able to tell. Paperback: 280 pages, 50 photos- Publisher: Paladin Press; ISBN: 1581603819. **Dealer Item#: ADVENTURE-BOOK**



AH1 ARROWHEAD WALLET

Cordura Tri-Fold Wallet
1 3/4" x 4" (closed)
Includes Two Arrowheads

Item#: ARROW-WALLET

Arrowhead: 1095 Carbon Steel-2.5" long

Item#: AH1-ARROWHEAD-CS



ESEE POCKET SURVIVAL / E&E KIT

The ESEE Survival / E&E Pocket Kit is built from quality, time-tested tools. The kit was designed by Randall's Adventure & Training in association with personnel working on overseas missions. It contains tools for survival as well as tools to help the user escape and evade hostile forces. It can be used in conjunction with your current knife/multi-tool and weapon system, or as a stand-alone kit. This is a "last ditch" Survival / E&E kit and is small enough to be carried on the person at all times when working or traveling in potentially hostile environments. Contents contained in a Cordura Nylon PSKT pouch (5.0" x 3.75" x 1.5").

Item#: S-KIT-ADVANCED

Item#: S-KIT-BASIC (Minus sutures, pry bar and hemostatic gauze)

Kit Includes: PSKT Pocket Container, Pencil, Mini Pry bar, Survival Saw Blade w/ Handle, Original SAS Wire Saw, Surgical Scalpel w/ Handle, Button Compass, Rescue Whistle, Can Opener, Signal Mirror w/ Aiming Screen Fire Starting Flint, Tinder Taps, Water Treatment Tablets, Fresnel Lens Magnifier / Fire Starter, Utility Wire, MilSpec Cord, AlokSak, Personal Survival Fishing Kit, Disposable Handcuff Key, Mini First Aid Kit (contents may vary).

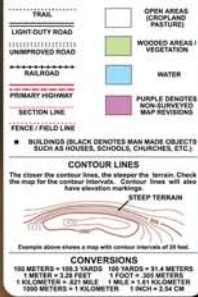




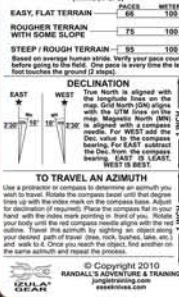
IZULA GEAR®



BASIC TOPO MAP SYMBOLS



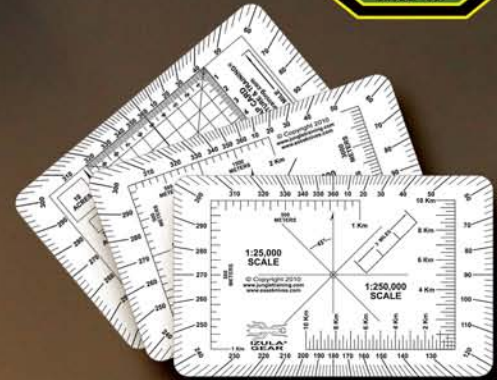
DETERMINING DISTANCE TRAVELED



USING UTM WITH GPS & TOPO MAP



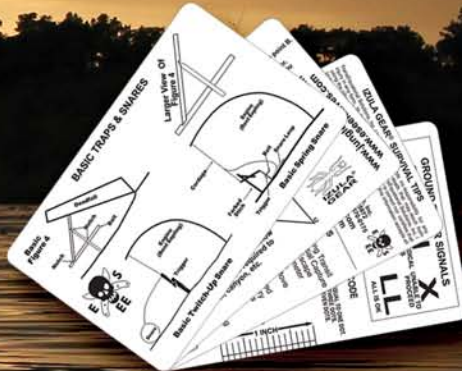
NEVER TRUST A GPS OR OTHER ELECTRONIC DEVICE AS YOUR ONLY METHOD FOR NAVIGATION



IZULA GEAR® NAVIGATIONS CARDS

This plastic card set is a must-have for anyone using GPS, map and compass. The set features 3 clear cards with 1:24,000, 1:25,000, 1:50,000, 1:100,000, and 1:250,000 map scales. The set also includes two white cards with survival tips, signaling tips, instructions on how to read a topo map, how to adjust for declination, how to determine distance traveled, how to use UTM with your GPS, map and compass, and how to travel an azimuth. Printed on 30 MIL plastic credit card stock. Made in the USA.

Item #: NAV-CARD



IZULA GEAR® SURVIVAL CARDS

Printed on 30 mil plastic credit card stock. Four white cards with survival tips, signaling tips, Morse code, trap and snare diagrams, fire building tips, navigation tips, escape and evasion tips and much more. Made in the USA.

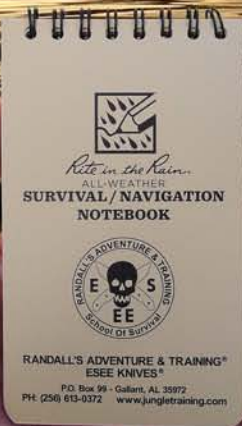
Item #: SURV-CARD



IZULA GEAR® NAVIGATION / SURVIVAL NOTEBOOK:

This pocket-sized notepad features land navigation information, survival tips, E&E tips, clear map scale cards and compass card. 3" x 5" size, spiral bound with 45 pages of Rite in the Rain® All-Weather writing paper. 2.5 oz. Made in the USA.

Item #: ESEE-RIR-NOTEBOOK



POCKET NAV CARDS:

Pocket navigation and survival cards. Seven plastic cards with micro Rite-In-The Rain notepad. 2.13" x 4.25" x .32" thick. Item #: POCKET-NAV-CARDS



IZULA GEAR® CARD HOLDER

Made in the U.S.A. from Cordura, these card holders are designed to hold Izula® Gear Survival, E&E and Nav Cards. Each card holder includes a split ring and snap hook for easy attachment to a pack, belt or other outdoor gear. (Cards not included)

Item #:
ESEE-CARD-HOLDER-B (Black)
ESEE-CARD-HOLDER-DT (Tan)





TRAVEL GEAR



IZULA GEAR® PASSPORT CASE

These tri-fold passport cases have multiple pockets inside for a passport, credit cards, driver's license, USB drive and a pen holder. The case closes securely with a large strip of Velcro. A secure zippered pocket with hidden money flap is inside as well. Multiple grommet holes for the paracord neck strap allows the case to be carried vertically or horizontally. An external pocket allows for storage of the carry strap when not in use. A shielding material to prevent theft of information via RFID is built into the case protecting your personal information on your passport and credit cards. Comes with an Izula Gear Fisher Pen, survival cards and two 6-mil zip lock bags to waterproof the entire case under extreme conditions. Made in the USA. Measures 4-1/4" x 6-1/2" closed. Black or tan color.

Item #:

PASSPORT-CASE-B (Black) With Izula Gear Pen

PASSPORT-CASE-DT (Tan) With Izula Gear Pen

PASSPORT-CASE-B-X (Black) Without Izula Gear Pen

PASSPORT-CASE-DT-X (Tan) Without Izula Gear Pen



TRAINING PATCH

2.5" diameter and features a Velcro backing that can be sewn or hot glued to most of your favorite clothing or gear.

Item #: RAT-PATCH



IZULA GEAR® EDC WALLET

Izula Gear EDC Wallet. A tri-fold money wallet with five storage pockets for money, credit cards and other items. Made in the USA from 500 denier Cordura. Measures 3-1/4" x 5" closed and 9-1/2" x 5" open. Available in black or tan.

Item #:

EDC-BILFOLD-B (Black)

EDC-BILFOLD-DT (Tan)



ESEE ADVENTURE CAP

The Adventure Cap is designed to be used in environments where quick identification may be necessary. The cap comes with 1" square IR (Infrared) Glint Tape (domestic sales only) affixed to the top of the cap and 1" square reflective tape (visible light spectrum) attached to the back.

Item #:

ADVENTURE-CAP (Domestic sales)

ADVENTURE-CAP-INT (International sales)

SURVIVAL GEAR

Gear Designed From Years Of Knowledge And Field Experience



IZULA GEAR® SURVIVAL BAG (contents not included):

Well thought out and tested to hold anyone's most complete survival kit. Inside pockets and attachment points for knife, rope and various other survival gear. Outside compression strap to keep contents secure. Dims: 8" w x 12" h x 5" deep • Includes large Kit Tin and backpack straps. Weight: 24oz • Materials: 1000 D nylon, YKK zippers • Special Features: MOLLE webbing, carry handle, double compartment • ESEE patch • Colors Available: OD green, fluorescent orange. Made in the USA.

Item#:

SURVIVAL-BAG (OD Bag)

SURVIVAL-BAG-OR (Orange Bag)



IZULA GEAR® MAP CASE:

A compact, durable, easy to use case designed by the Randall's Adventure and Training land navigation team. Made to carry solo or attached to the Izula Gear Survival bag using the Velcro back. Dims: 4.5" x 8" closed: 13" x 8" open • Weight: 4.2 oz • Materials: 1000 denier nylon, clear vinyl interior • Special Features: exterior and interior rain flaps to keep map dry, additional exterior pockets, pen/ pencil loop • ESEE patch • Colors available: OD green, fluorescent orange • Quick disconnect keychain. Made in the USA.

Item #: **MAP-CASE (OD)** **MAP-CASE-OR (Orange)**

IZULA GEAR® TIN

The Izula Gear Tin is a pocket-sized survival kit tin, 3.75" long x 2.25" wide x .75" deep. It features the Randall's Adventure & Training logo on the lid.

Item #:
KIT-CONTAINER



RANDALL'S ADVENTURE & TRAINING® MINI SURVIVAL KIT:

Components: Black Tin Container, Fishing Kit, QuickTinder Tabs (4 each), Small Ferro Rod w/ Striker, Small Signal Mirror, Cordage, Button Compass, Snare Wire, Small Roll, Folding Razor Blade, Survival Card (Single Card), Brite Strike Lite. (Components may vary) Item #: **MINI-KIT**

FREEBORN GEAR® SURVIVAL TARP:

The SURVIVAL TARP can be carried in a survival kit, in your pocket, or in a vehicle. Built from 30 denier blaze orange nylon, the tarp is designed to have multiple uses: signal panel, a quick tarp to keep the user and gear dry, an improvised camp chair / mini-hammock, or snapped together to create a bag for holding debris, thus creating an insulating mattress for sleeping on the ground. 5' x 5' in size with snaps and tie-down tabs around the perimeter. Overall weight: 6 ounces. Made in the USA. Item#: **SURVIVAL-TARP**



Randall's Adventure & Training®

Survival • Rescue • Wilderness Medicine • Land Navigation • SAR • Jungle Survival • Firearms

Certified Instructors • Licensed & Insured

Randall's Adventure and Training® is a recognized leader in Latin American jungle and domestic wilderness training. As a professional wilderness training team and hard-use gear manufacturer, we understand the unique needs of personnel operating in jungle and woodland environments. If you need training in jungle or wilderness survival, land navigation, wilderness rope SRT / high-angle rescue, firearms disciplines, wilderness medicine, team building or SAR, then Randall's Adventure & Training® is your answer.

Visit www.jungletraining.com for our current class schedule.



Certified ATOA Training Venue



P.O. Box 99 • Gallant, AL 35972 • PH: (256) 613-0372 • FAX: (256) 570-0175
Internet: www.jungletraining.com Email: info@jungletraining.com

Randall's Adventure & Training®

Survival • Rescue • Wilderness Medicine • Land Navigation • SAR • Firearms • Jungle Survival
Certified Instructors • Licensed & Insured



P.O. Box 99 • Gallant, AL 35972 • PH: (256) 613-0372 • FAX: (256) 570-0175
Internet: www.jungletraining.com Email: info@jungletraining.com

MANUFACTURING & WARRANTY

ESEE Knives are made in the USA by Rowen Manufacturing, Inc. in Idaho Falls, Idaho by some of the finest knife makers and craftsmen in the world. With a lifetime of experience in the precision machining industry, Rowen Manufacturing is second-to-none when it comes to quality control, customer service and manufacturing innovation. Rowen-made ESEE Knives are built to work and last for generations to come.



ESEE KNIVES® NO QUESTIONS ASKED LIFETIME WARRANTY

Setting The Industry Standard For Customer Service

No Questions Asked Warranty on all 1095 carbon steel knives. If you break it, send it back and we'll replace it. Warranty is transferable. In other words, we warranty the knife no matter how many times it's been traded, sold or given away. No sales receipt required. We do not guarantee against rust or normal wear and tear.